

WE SENSE
TEMPERATURE



40 YEARS

LONG EXPERIENCE IN
DESIGN AND PRODUCTION
OF TEMPERATURE SENSORS.



220

ONE OF THE LARGEST
TEMPERATURE SENSORS
MANUFACTURING COMPANIES.

Design office



Radiographic control

WE SENSE TEMPERATURE

Our company has a long experience in design and manufacturing of temperature probes developed by working close to our customers.

Over the years, we have been investing constantly in process and product research and innovation and this has enabled us to reach high targets in terms of sales revenues and gain significant recognition in the worldwide market.

Currently Italcoppie Sensori is one of the largest players among the most important European temperature sensors manufacturers.

03



Laser welding



CNC machining





PRODUCTION IN TWO PLANTS
(ITALY AND NORTH AFRICA) TO MEET
ANY MARKET REQUIREMENT.



OF PROBES PRODUCED
IN ONE YEAR.



Final Testing Hammamet
production plant

ENGINEERING AND PRODUCTION

We have two production facilities:
one in Cremona in northern Italy and
one in Hammamet in Tunisia.

**This enables us to meet
different market needs.**

05



Micro Welding Hammamet
production plant



Overmoulding area,
Cremona production plant



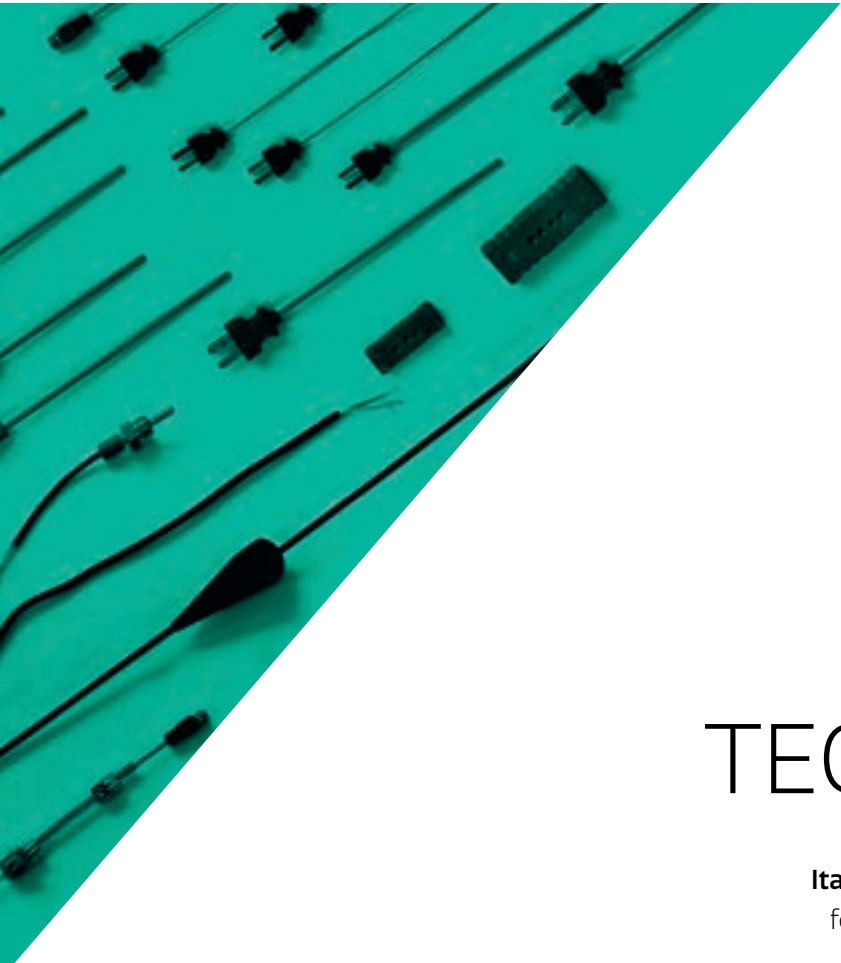
4000

TYPES OF DIFFERENT
APPLICATIONS.



Over-moulding

M.I. cable automatic
stripping



MULTI TECHNOLOGY

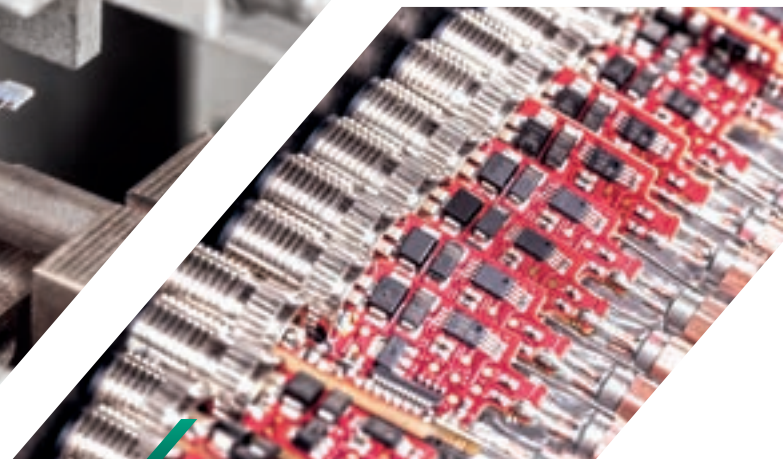
Italcoppie Sensori has provided solutions for customers in several industrial fields.

Temperature is an important parameter to be controlled but at the same time a difficult measurement as it can be influenced by many variables.

The capability to use different production technologies enables us to make optimized products to specific applications.



RTD automatic welding



Electronic integration



SV&S.it

ITALCOPPIE SENSORI srl

Via A. Tonani, 10 - Fraz. S. Giacomo al Campo
26030 Malagnino (CR) - Italy
T (+39) 0372 441220 - F (+39) 0372 441238
info.commerciali@italcoppie.it